

technology for living

Provincial Respiratory Outreach Program • prop@technologyforliving.org • 1.866.326.1245
 Technology for Independent Living Program • til@technologyforliving.org • 604.326.0175

ResMed Stellar



Power on unit from switch on back of unit. This will bring the unit to a stand-by mode

To start blower, press the start/stop button on top of the unit.

To stop therapy and bring unit to stand-by, press the start/stop button on top of the unit and follow the onscreen instructions.

To power off the unit, confirm unit is in stand-by and push switch on back of unit. Follow the onscreen instructions.

How to make Setting changes



Press the and simultaneously for three seconds until clinical mode opens and duration options appear. The padlock will unlock once a duration selection is made.

ClinicalMode			Timin	Timax	Trigger	Pathology	Mode	IPAP
Inactive period before patient mode reactivated.			0,3 sec	2,0 sec	MEDIUM	Normal	ST	10,0 cmH2O
5 minutes	120 minutes	Unlimited	Cycle	Rise Time	Fall Time	EPAP	Backup Rate	Advanced Settings
Set Time			MEDIUM	150	200	4,0 cmH2O	10 bpm	
			Mask Type					
			FullFace					

Turn and highlight in darker blue the parameter to be changed. Press and the highlighted parameter will change to orange , turning the will allow you to navigate the selections within each parameter. Press to confirm change.

Continue to turn and press the to navigate, select, and confirm all changes.

To return to the Patient menu, press and simultaneously for at least three seconds.

Changing humidifier setting

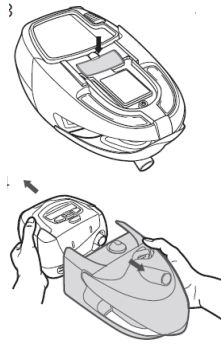
Turn control dial on top of the humidifier to adjust humidity 0 (minimum) to 6 (maximum).



Attaching and Detaching the Humidifier Station

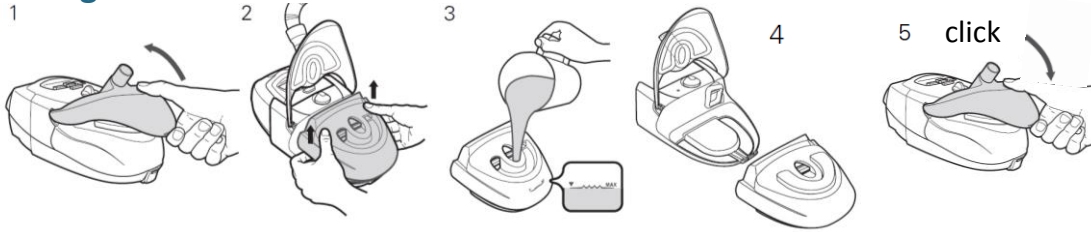


On a flat surface line up the bilevel with the humidifier as pictured above. Push and click together



Confirm power disconnected and water chamber removed. Underneath the unit, press the large silver button located between the bilevel and docking station. The two units will detach from one another. If required, gently pull apart, while pressing the silver button.

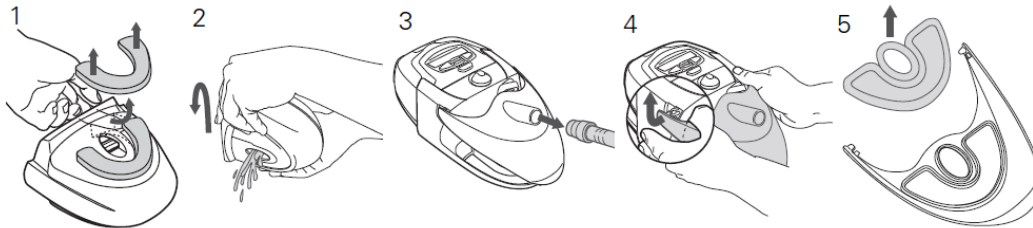
Filling the water chamber



*Do not fill water chamber while it sits in docking station as it can splash into the motor of bilevel unit

1. Lift the cover (Let water pot and water contents cool before handling.)
2. Remove water chamber and discard any water contents leftover from the previous night.
3. On a flat surface pour distilled water into water chamber. Do not fill above MAX line
4. Prior to replacing water chamber into docking station, wipe up any residual water found on heater plate.
5. Confirm cover 'clicks' back down over water tub in docking station

Cleaning the water tub and humidifier lid



1. Remove spill guard (Let water pot and water contents cool before handling.)
2. Discard any excess water from water chamber
3. Detach hose from air outlet
4. Remove the cover by gently flexing one cover arm away and up from the docking station until the cover detaches completely
5. Peel the cover seal away from the cover.

Perform once a week or as needed

Use warm soapy water and soak for 10 minutes. With a soft cloth remove any debris. Rinse with warm water. Air dry.

How to Change Filter

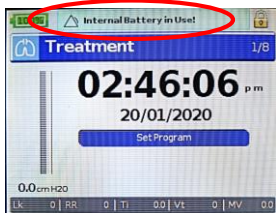


Replace filter every 6 months or as needed. The filter is disposable and cannot be reused.



Tab visible on left side, once inserted into bilevel

Internal Battery



In the case of a power disruption (A/C), the device will operate using the internal battery. An audible alert will sound and visual alarm on screen will read "Internal Battery in Use!". The power source indicator will change to battery. Press the Alarm Mute button to acknowledge and dismiss.

It can take up to three hours to fully recharge. Refer to manual for detailed maintenance schedule.

