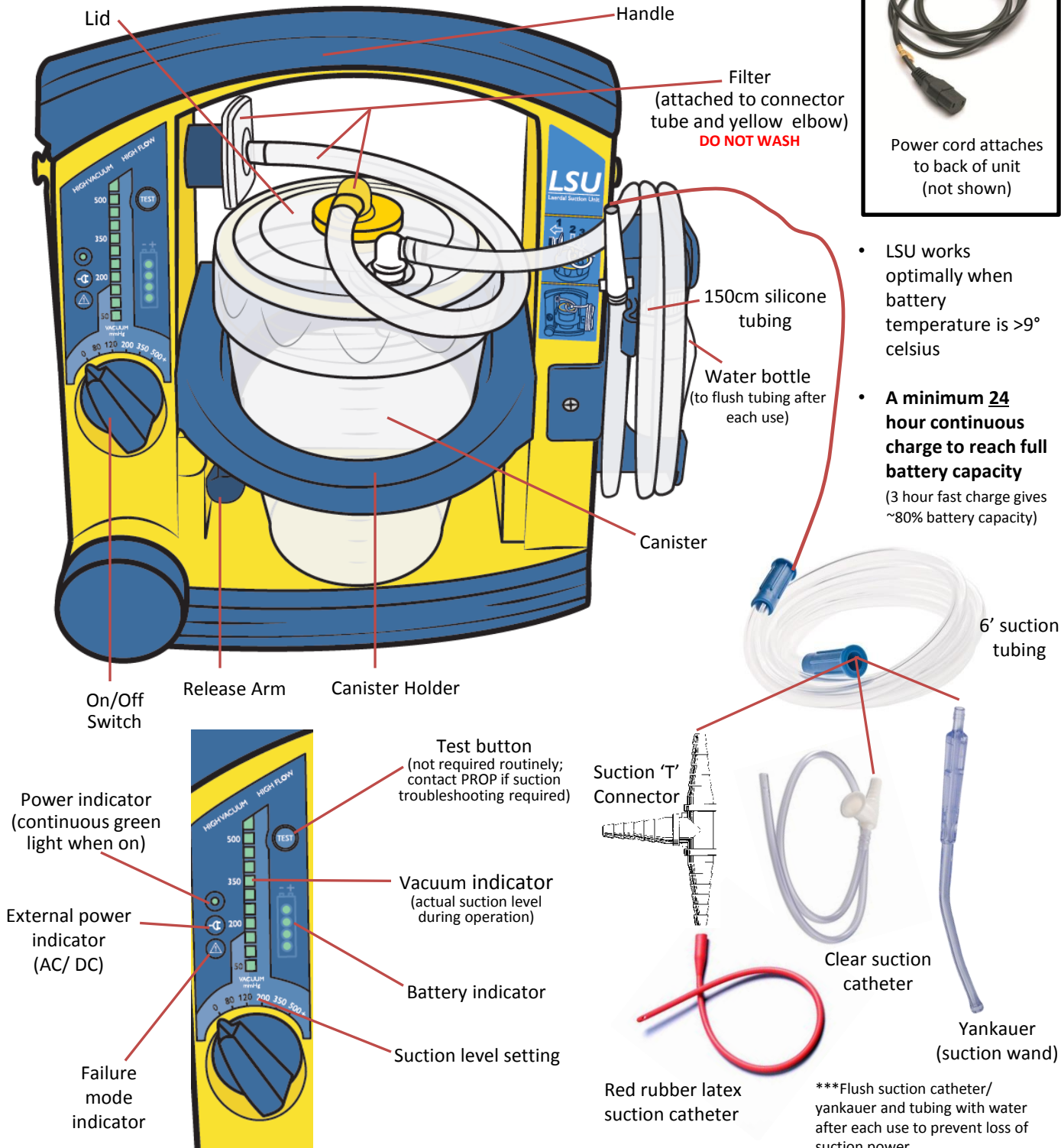
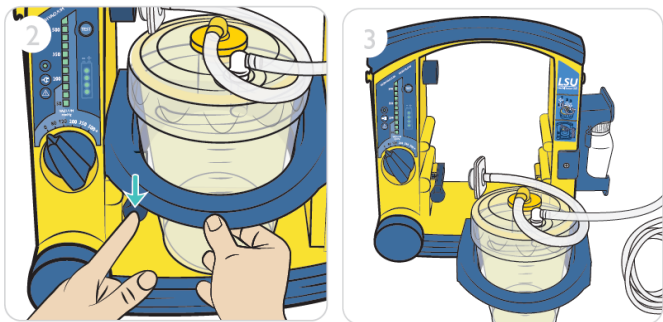


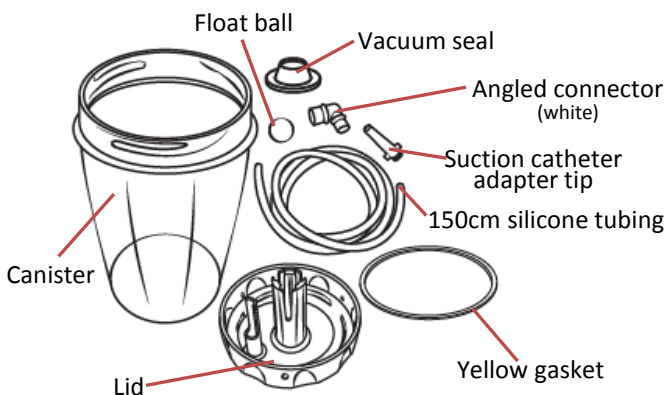
Laerdal Suction Unit (LSU)



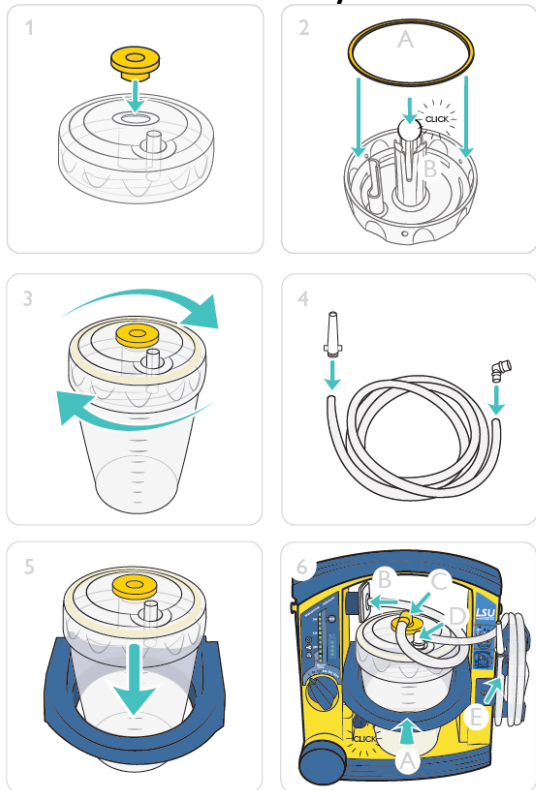
To remove blue 'canister holder', **push the release arm down**, while pulling the blue 'canister holder' towards you.



Parts for cleaning



Reassembly



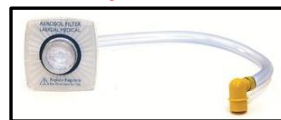
Recommended Cleaning Schedule

Daily

- Empty collection container and rinse
- Flush yankauer (suction wand) and tubing with water after each use to keep tubing patent
- Ensure your suction unit is plugged in and charging

Weekly

- Suck hot soapy water through the yankauer (suction wand) and suction tubing, flush with water to rinse
- Disassemble parts for cleaning (**pictured to the left**)
- **Do not wash filter assembly (filter, connector tube, and yellow elbow)**



- Wash off large particles, immerse parts in hot soapy water, rinse, and air dry
- Reassemble parts
- Wipe dust and debris off surface of suction unit with damp cloth or mild detergent
- Confirm presence of suction power once assembled

Monthly

- Inspect filter, replace as needed
- Inspect all components for cracks and wear and tear, replace as needed

To order suction supplies, please use the following PROP identification numbers below:

ID #	Item Description
651	Suction canister (canister, lid, gasket, float ball, vacuum seal)
595	Filter assembly (filter, short connector tubing, yellow elbow)
610	150 cm silicone tubing
36	Yankauer (suction wand)
440	6' suction tubing
38	Suction 'T' connector
33	Red rubber latex suction catheter (14-16F)
695	Clear suction catheter (14F)

Alternative suction catheter sizes, individual parts, and items not listed above can be inquired about by calling PROP directly