



te**ch**nology for livi**ng**

Emergency Planning



For people who rely on
ventilators and other devices

UPDATED 2024



Have Your Plan Ready

In moments of crisis, having the information and knowledge to respond effectively can make all the difference. This emergency planning guide is designed to help you organize all your important contacts and medical information.



When Emergencies Happen

Sometimes a situation may arise when you feel your safety is at risk. If you feel you have an emergency respiratory situation, you must call 911 or contact your hospital or doctor.

In Case of a Power Outage

If there is a power outage or other emergency in your community, **do not call PROP**. Our after hours On Call Service is only for equipment troubleshooting. Call 911 or the appropriate agency, such as BC Hydro, to find out the facts and what you should do. We are unable to offer assistance in an emergency, so don't delay calling the authorities that can provide the help you need.

BC Hydro Power Outage Contact Information

1-888-769-3766 or <https://www.bchydro.com/outages>



Member Information

First Name:

Last Name:

Preferred Name:

PHN:

Street Address:

City:

Postal Code:

Phone:

Cell:

Email:

Diagnosis:

Your Device and Settings

Device Type:

Device brand:

Device model:

Mode:

Volume:

Pressure:

Respiratory (Backup) Rate:

Waveform:

Sensitivity (Trigger):

High Alarm:

Low Alarm:

Other:

Alternative Sources of Power

Make arrangements to have at least one fully accessible alternative location for power close to your home. This could be a hospital, hotel, fire hall, ambulance or gas station. Have at least one contact person at the location who is familiar with your needs.



Alternative Source of Power:

Street Address:

City:

Postal Code:

Contact Person 1:

Phone:

Cell:

Contact Person 2:

Phone:

Cell:

Alternative Source of Power:

Street Address:

City:

Postal Code:

Contact Person 1:

Phone:

Cell:

Contact Person 2:

Phone:

Cell:

Back-up Power for Ventilator Users

Ventilators are powered primarily by plugging the power cord into a wall outlet, otherwise known as AC Power. When there is a power outage, ventilators will not receive power from the wall outlets.

All PROP ventilators can be powered by AC power (power from wall outlets), internal battery, and DC power such as a battery (external to ventilator). When the ventilator stops receiving external AC or DC power, the ventilator will automatically switch to the internal battery.

It is important to have a back-up power source for your ventilator. In a power outage, your ventilator's internal batteries may run out before power is restored to your home.

PROP Member Responsibilities

PROP does not supply back-up power systems. It is the members' responsibility to create their own Emergency Preparedness Plan, including a back-up power system. We will be happy to assist you with any questions you may have after reading through our Back-Up Power for Ventilators handout (see page 7)

It is also important that all of your support team know how to setup and operate your equipment with your backup battery.

Back-up Power for BiPAP Users

Bilevels are primarily powered by plugging the power cord into a wall outlet, also known as AC power. If your bilevel does not have an internal battery, and a power outage occurs, you will not be able to use your bilevel until power is restored. Even if your bilevel does have an internal battery, it may only supply power long enough to find an alternative power source.

Our staff will be happy to assist with any questions you may have after reading through our Backup Power for BiLevels handout (see page 7)

PROP Member Responsibilities

PROP does not supply back-up power solutions. PROP members are responsible for purchasing back-up power solutions for their bilevel and other devices they deem essential during a power outage.

It is essential that PROP members have an “Emergency Preparedness Plan” that should include, but is not limited to, a back-up power plan to run their essential electronic devices. The back-up power portion of your Emergency Preparedness Plan should include back-up power solutions, as well as locations near you with a back-up power source (Ex: fire station, police station, hotel, hospital, etc.)

Backup Power Handouts

TFL’s backup power handouts for ventilator users and BiLevel users can be found on our website (www.technologyforliving.org) under the resources section, or by scanning the QR codes below.



technology for living
 Provincial Respiratory Outreach Program • prop@technologyforliving.org • 1.866.326.1245
 Technology for Independent Living Program • til@technologyforliving.org • 604.326.0175

Ventilator Back-up Power

Ventilators are powered primarily by plugging the power cord into a wall outlet, otherwise known as AC Power. When there is a power outage, ventilators will not receive power from the wall outlets.

All PROP ventilators can be powered by AC power (power from wall outlets), internal battery, and DC power such as a battery (external to ventilator). When the ventilator stops receiving external AC or DC power, the ventilator will automatically switch to the internal battery.

It is important to have a back-up power source for your ventilator. In a power outage, your ventilator's internal batteries may run out before power is restored to your home.

This document provides information about available back-up power systems for PROP ventilators.

Clients Responsibility

PROP does not supply back-up power systems. It is the clients' responsibility to create their own Emergency Preparedness Plan, including a back-up power system. PROP will be happy to assist you with any questions you may have after reading through this document.

Emergency Preparedness Plan

All PROP clients MUST have an "Emergency Preparedness Plan" in case of a power outage. This is very important for PROP clients who depend on their ventilator. You can get an estimate of how long the power outage may last by contacting BC Hydro at 1-888-769-3766. If BC Hydro expects the power to be out longer than your ventilator's internal battery would last, you may need to go somewhere not affected by the power outage.

Your emergency preparedness plan should include a facility with a back-up power source (ie: emergency power generator). You need to discuss their availability during your planning, but some possible solutions may include: Police Station, Fire Station, Hotel, or Hospital.

Self-Help Guide: Back-Up Power for Bilevels

Bilevels are primarily powered by plugging the power cord into a wall outlet, also known as AC power. If your bilevel does not have an internal battery, and a power outage occurs, you will not be able to use your bilevel until power is restored. Even if your bilevel does have an internal battery, it may only supply power long enough to find an alternative power source.

This document provides information about alternative power sources for bilevels provided by the PROP program. PROP staff will be happy to assist with any questions you may have after reading through this document.

PROP Member Responsibilities

PROP does not supply back-up power solutions. PROP members are responsible for purchasing back-up power solutions for their bilevel and other devices they deem essential during a power outage.

It is essential that PROP members have an "Emergency Preparedness Plan" that should include, but is not limited to, a back-up power plan to run their essential electronic devices. The back-up power portion of your Emergency Preparedness Plan should include back-up power solutions, as well as locations near you with a back-up power source (ie: fire station, police station, hotel, hospital, etc.)

During a power outage, you can contact BC Hydro, at 1-888-769-3766, for an estimate of when your power will be restored to your area.

Back-Up Power Solutions

External Battery Packs

External Battery Packs, either available from the manufacturer of your bilevel or a third-party manufacturer, are devices that contain a battery to power your bilevel when AC power is not available (power outage, travel, etc).



Most bilevel manufacturers produce an external battery pack to work with their devices, but the accessory cord you need to order with it depends on your bilevel model. You should contact the distributor of the external battery pack, to ensure it will work with your bilevel model, before making your purchase.

Important Notice

It is paramount to realize that the Ambu-Bag is your primary piece of emergency equipment. Your Ambu-Bag needs to be functioning and ready to use at any moment. Perform daily checks to ensure everybody in your Support Team knows how to assist breathing with the Ambu-bag.



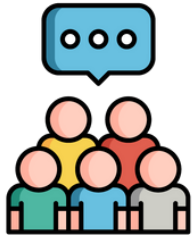
Travel Bag Checklist

Have a travel bag packed with everything you would need to take with you in an emergency. The contents of your travel bag should include (if applicable):

- Spare trach tubes/spare bilevel masks
- Spare complete circuit
- Ambu bag and mask
- Portable suction unit and accessories
- List of your medications and medical needs, including details of the strength and dose of your medications
- Copy of current settings
- Copy of this booklet
- Any other supplies you may need:



If you have a back up power source, periodically test its duration, so you know how much time you have before you implement your next plan of action.



Your Personal Support Network

Members of your personal support network are people who know your health care needs and who may be contacted in an emergency.

Family Doctor

Name:

Street Address:

City:

Postal Code:

Phone:

Fax:

Email:



Other Doctors and Health Care Professionals

Name:

Street Address:

City:

Postal Code:

Phone:

Fax:

Email:



Friend or Family Member

Name:

Street Address:

City:

Postal Code:

Phone:

Cell:

Email:

Relationship to member:

Friend or Family Member

Name:

Street Address:

City:

Postal Code:

Phone:

Cell:

Email:

Relationship to member:



When it comes to your supplies, keep enough stock on hand so that you only need to order respiratory supplies a few times a year. This way there is no panic when you run short or if something is no longer usable.

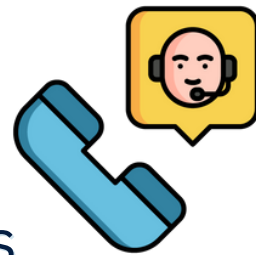


BC Hydro

1-866-769-3766

www.bchydro.com/outages

Call BC Hydro to report your power outage and for further information.



To learn more about emergency preparedness, check out <https://www.getprepared.gc.ca> or www.pep.bc.ca

Thank you to our PROP and TIL members for the feedback used in this booklet.

technology for living

Emergency Planning: For people who rely on ventilators and other devices. Updated in 2024.

Technology For Living

Provincial Respiratory Outreach Program (PROP)

#103 - 366 East Kent Avenue South, Vancouver BC V5X 4N6

Phone toll-free 1-866-326-1245 (local and long distance)