

# technology for living

Provincial Respiratory Outreach Program • prop@technologyforliving.org • 1.866.326.1245

Technology for Independent Living Program • til@technologyforliving.org • 604.326.0175



## Breas Vivo 45 LS

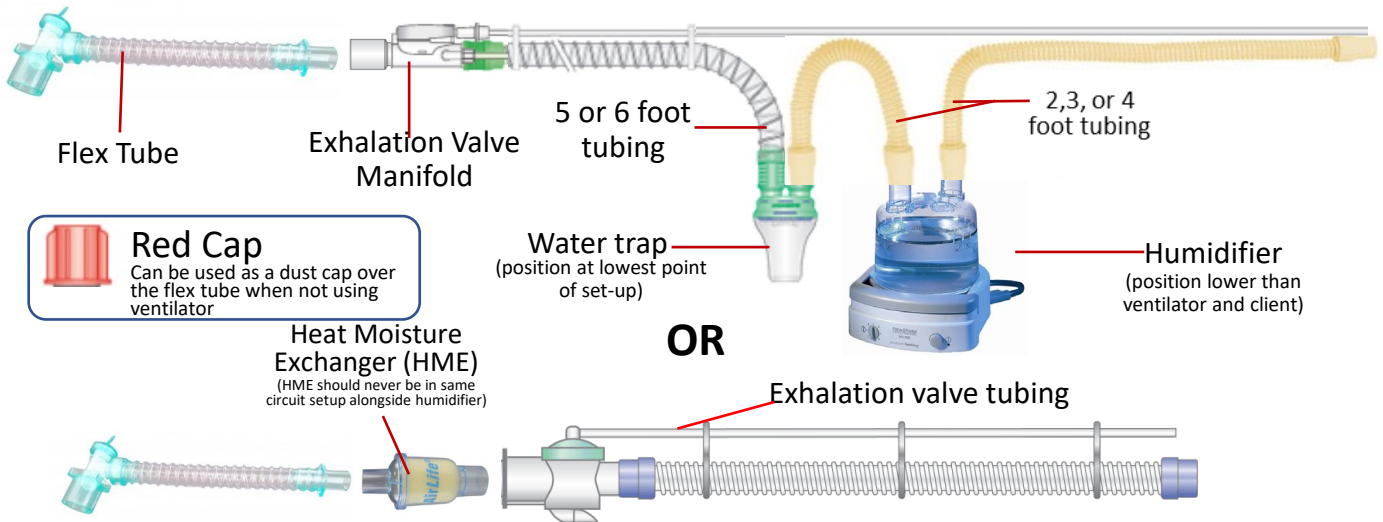


Navigation keys

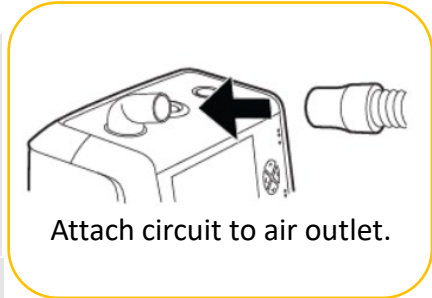
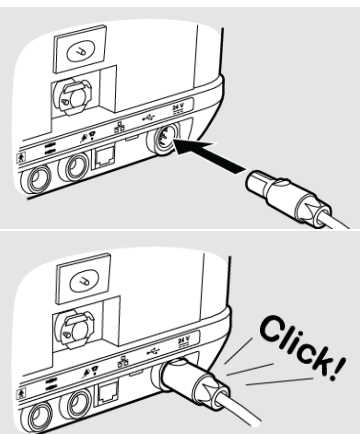
Navigation/Function Buttons

Information Button (use to get explanations about settings or alarms)

### Circuit Set-up (Bedside vs. Chair)

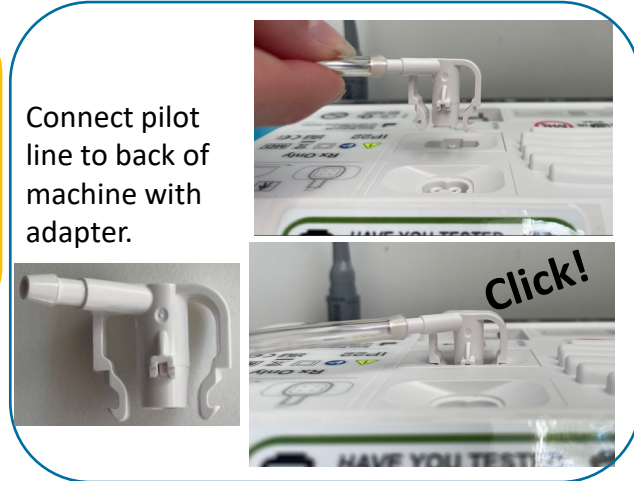


### Preparing for Use



Attach circuit to air outlet.


Ensure the power cord is clicked into place to power the device.





Connect pilot line to back of machine with adapter.

Click!

## Turning ON/OFF Ventilation

To turn on the blower and initiate ventilation, press and hold the power button until the progress bar is filled 

To turn blower off, hold the power button until the progress bar is full  then press the audio pause button to confirm stop 

To turn on unit, press the power button on the top of the machine.



## Alarm Indicators



Medium priority alarms

High priority alarms

Paused alarm indicator

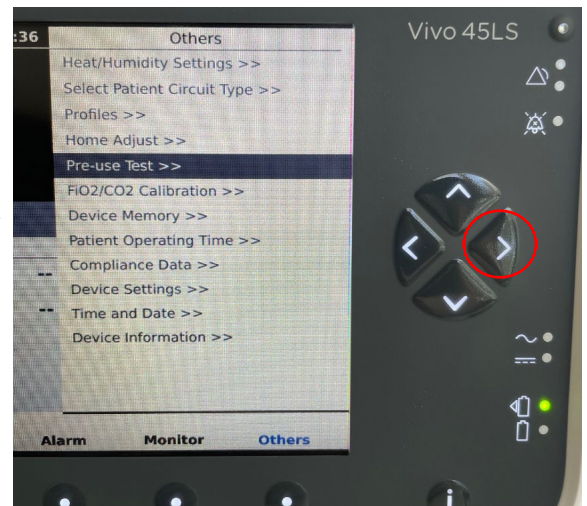
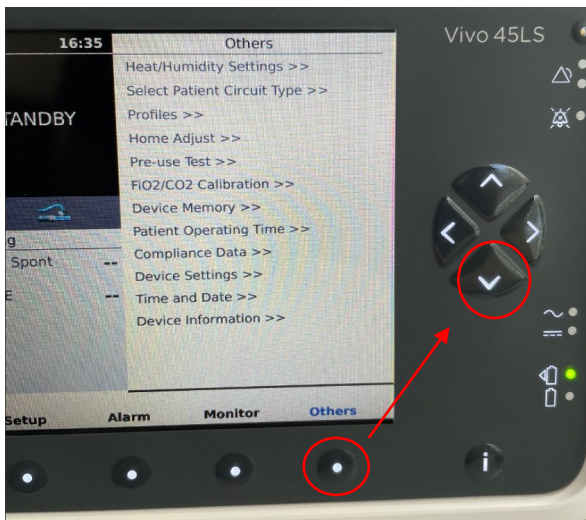
Press alarm silence button to pause sound. Alarm will clear when issue resolved.



## Pre-Use Check

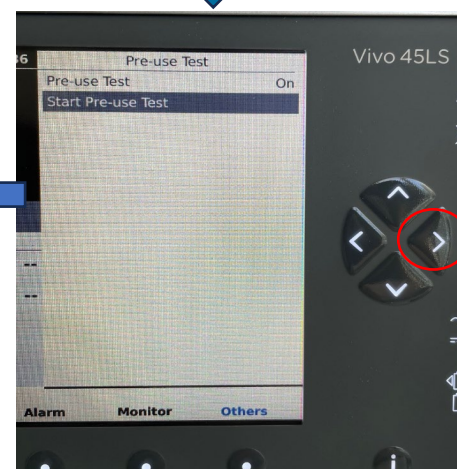
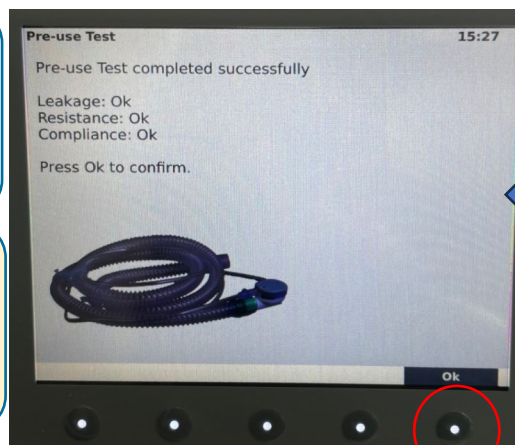
To ensure optimal and accurate performance, complete a pre-use check with every circuit change and at regular intervals. Do NOT perform with member connected.

If not prompted when the Vivo is turned on, pre-use check can be accessed from "Others" section.



If pre-use check successful (indicated by "ok"), you may connect the member and start ventilation when ready.

If results show "fail", check circuit, repeat pre-use check or contact PROP for support.



## Testing the Circuit Prior to Use (2 tests)

A circuit test is recommended to confirm alarms are effective, especially following a circuit change, a ventilator exchange, extended length of time away from ventilator, and any setting changes.



### Occlusion Test

With circuit completely assembled and attached to the ventilator, turn on ventilation air flow. Occlude flex tube with red cap or use the palm of your hand to completely block any air from escaping the circuit.

Within 15 seconds, confirm audible and visual ventilator alarms: 'HIGH PRESSURE'.

High Pressure		Total Rate (bpm)
Monitoring		0.0
Ppeak (cmH2O)	MVI (l)	Spont Rate (bpm)
45.9	0	2
PEEP (cmH2O)	Vti (ml)	% Spont
5.0	2	
Pmean (cmH2O)	% in TgV	SpO2 (%)
14.0		
Leakage (l/min)	FiO2 (%)	Pulse Rate (bpm)

### Disconnect Test

With circuit completely assembled and attached to the ventilator, turn on ventilation air flow. Allow flex tube outlet to blow freely and un-occluded in the surrounding environment.

Within 15 seconds, confirm audible and visual ventilator alarms: 'DISCONNECTION.' and/or 'LOW PRESSURE'.



Low Pressure		Total Rate (bpm)
Monitoring		17.3
Ppeak (cmH2O)	MVI (l)	Spont Rate (bpm)
0.0	17.3	2
PEEP (cmH2O)	Vti (ml)	% Spont
0.1	484	
Pmean (cmH2O)	% in TgV	SpO2 (%)
0.1		
Leakage (l/min)	FiO2 (%)	Pulse Rate (bpm)

Once alarms are successfully confirmed for both tests, you may proceed with attaching circuit to client and turning ventilator flow on for use.

If audible and visual confirmation cannot be achieved. Turn off airflow, check connections are assembled correctly and tightly, then repeat tests.

**If audible and visual confirmation of both tests cannot be achieved, call PROP for support.**

## Making Parameter Changes

VCV(A)-Adult		Settings	
VENTILATOR STANDBY		Tidal Volume	420 ml
92% 80%		PEEP	5.0 cmH2O
Monitoring		Breath Rate	23 bpm
Total Rate (bpm)	% Spont	Insp. Time	1.2 s
MVI (l)	I:E	I:E calc	1:1.2
Insp. Time (s)		Rise Time	Off
		Insp. Trigger	3
		Flow Pattern	

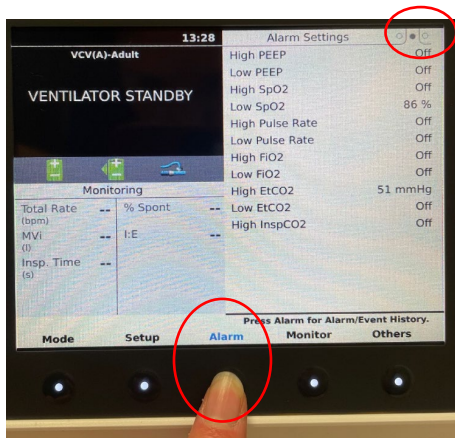
VCV(A)-Adult		Alarm Settings	
VENTILATOR STANDBY		High Pressure	45.0 cmH2O
92% 80%		Low Pressure	5.0 cmH2O
Monitoring		High Vti	Off
Total Rate (bpm)	% Spont	Low Vti	Off
MVI (l)	I:E	High Breath Rate	Off
Insp. Time (s)		Low Breath Rate	Off
		High MVI	Off
		Low MVI	Off
		Apnea	Off
		Disconnection	On
		Obstruction	Off
		Rebreathing	On

The currently displayed section will be indicated in **BLUE** text.

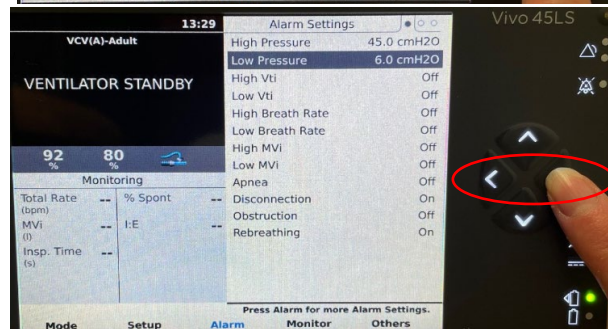
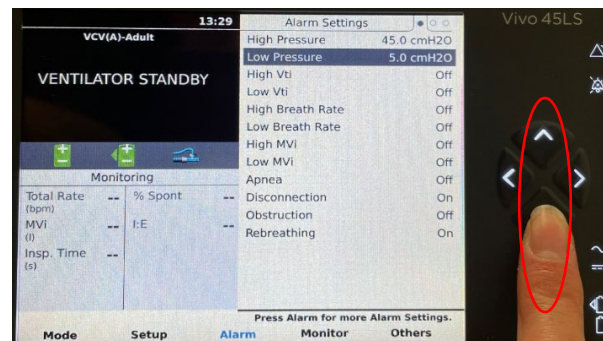
When initially setting up ventilation, or when changing ventilation modes, you must select NEXT to confirm.

VCV(A)-Adult		Mode	
VENTILATOR STANDBY		Ventilation Mode	Pressure
92% 81%		Volume	CPAP
Monitoring		Breath Mode	Assist/Control
Total Rate (bpm)	% Spont	Support	MPV SIMV
MVI (l)	I:E	Patient Mode	Adult Paediatric
Insp. Time (s)		Device Mode	Clinical Home
		Reset to Basic Settings	
		Press Next to adjust settings.	
		Cancel	Next

Use the 5 navigation buttons, as well as the up/down arrows to navigate the menus.



Sections with multiple pages are indicated by the dotted tabs at the upper right corner.











Pressing on the button multiple times will scroll through each page.

Use the up/down arrows to enter the menu. Use the right/left arrows to change the parameter, or to open a sub section.

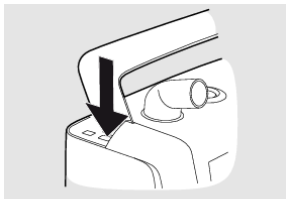
## Supplies

Below reviews standard supplies issued to PROP members. Each member may not be using all items listed or these specific items. Please call PROP if you have any questions.

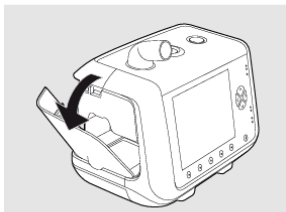
A recommended cleaning and replacement schedule is adaptable to each PROP member. Carefully inspect each piece/item and replace any worn or damaged item.

Item	Description	Reusable	Frequency of Cleaning	Frequency of Replacement	PROP Order ID#
	Grey Coarse Filter	Yes	Weekly	Yearly	1572
	White Fine Filter	No	NA	Monthly	1571
	Circuit (includes red cap, exhalation valve, 5 or 6 foot corrugated tubing, and 2 sensing lines)	Yes	Once a week and as needed <b>(Do not wash the exhalation valve or sensing lines)</b>	Every 4-6 weeks or as needed	748
	Water Trap	Yes	Once a week and as needed	As Needed	947
	2, 3, or 4 foot tubing	Yes	Once a week and as needed	As Needed	2ft – 5 3ft – 777 4ft – 6
	Water Chamber	Yes	Once a week and as needed	As Needed	612
	Flex Tube	Yes	Once a week and as needed	Every 4-6 weeks or as needed	782
	HME (Air Life)	No	N/A	After 24 hours of use	847

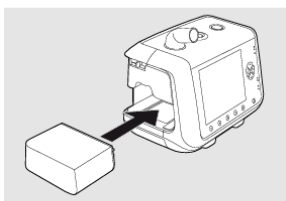
## Changing the Click-In Battery



Press button (1) under handle to release side panel.

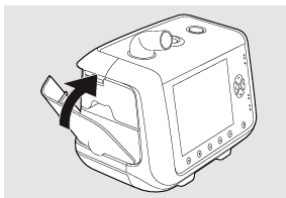


Pull side panel off.



Press on release lever under the click-in battery.

Replace battery.



Replace side panel.

## Replacing Air Filter





Press button under handle to release blue cover.

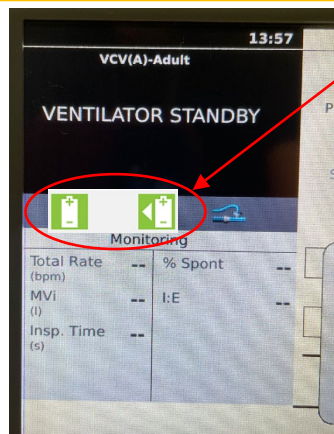


**Coarse filter** should be WASHED once weekly, CHANGED once yearly. **Fine filter** CHECKED monthly, CHANGED/DISPOSED minimally every 6 months.

## Charging the Internal Battery

The Breas Vivo 45 has 2 batteries, an internal battery , and a click-in battery . The internal battery takes 2 hours to fully charge and lasts approx. 2 hours. The click-in battery takes 4 hours to fully charge and lasts approx. 5.5 hours.

The power indicator shows AC power, DC power, click-in battery, and internal battery source (top down) illuminated in green.



While running, the battery icon indicates approximate charge level. While in standby, icon will flash between icon and battery percentage.

		>50% charge
		20-50% charge
		<20% charge

## Cleaning (Any reusable items listed above follows the same procedure below)

- Disassemble all pieces completely. Fill a basin with warm water, adding dish detergent (mild, unscented, non-antibacterial) to make a warm sudsy solution.
- Submerge all pieces entirely in the sudsy water. Soak to ease removal of dirt.
- Rinse all cleaned pieces with water to remove any remaining soap residue.
- Air-dry all pieces completely before assembly.
- Inspect for cleanliness to ensure no visible dirt remains. Re-clean any pieces that appear dirty.
- Inspect every piece individually for any cracks, tears, obvious signs of wear.
- Throw out any piece(s) that are cracked, torn, or worn. Replace with a same clean and intact piece.

The exterior of the ventilator surface requires a periodic wipe down with a damp cloth of mild detergent or household cleaner. Wipe off any residue with a warm damp cloth.

For more information:

**[www.technologyforliving.org](http://www.technologyforliving.org)**

**1-866-326-1245**